



LAKE RESOURCES

ASX: LKE



LAKE RESOURCES

Large Scale - Jujuy Leases
Heartland of Prime Lithium

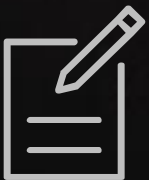
Landmark Agreement 1 Mar 2018

Disclaimer



General Statement and Cautionary Statement

This presentation has been prepared by Lake Resources N.L (Lake) for information purposes and meetings with sophisticated and professional investors, institutional investors and brokers and not any particular party. The information in this presentation is based upon public information and internally developed data and reflects prevailing conditions and views as of this date, all of which are accordingly subject to change. The information contained in this presentation is of general nature and is not intended to address the circumstances of any particular individual or entity. There is no guarantee that the information is accurate as of the date it is received or that it will continue to be accurate in the future. No warranties or representations can be made as to the origin, validity, accuracy, completeness, currency or reliability of the information. No one should act upon such information without appropriate professional advice after a thorough examination of the particular situation. Lake Resources NL accepts no responsibility or liability to any party in connection with this information or views and Lake disclaims and excludes all liability (to the extent permitted by law) for losses, claims, damages, demands, costs and expenses of whatever nature arising in any way out of or in connection with the information, its accuracy, completeness or by reason of reliance by any person on any of it. The information regarding projects described in this presentation are based on exploration targets. The potential quantity and grade of an exploration target is conceptual in nature, there has been insufficient exploration to determine a mineral resource and there is no certainty that further exploration work will result in the determination of mineral resources or that potentially economic quantities of lithium will be discovered. Some property applications are located within and around the Orocobre and Lithium Americas projects and although data is limited within the properties, the tenements may cover potential extensions to the Cauchari/Olaroz projects with potential extensions to aquifers, although this provides no assurance that any resource will be identified on the Lake applications. The lithium pegmatite leases under option occur adjacent to past producers of spodumene but no potential extension to any mineralisation can be assured.



Forward Looking Statements

Certain statements contained in this presentation, including information as to the future financial performance of the projects, are forward-looking statements. Such forward-looking statements are necessarily based upon a number of estimates and assumptions that, while considered reasonable by Lake Resources N.L. are inherently subject to significant technical, business, economic, competitive, political and social uncertainties and contingencies; involve known and unknown risks and uncertainties and other factors that could cause actual events or results to differ materially from estimated or anticipated events or results, expressed or implied, reflected in such forward-looking statements; and may include, among other things, statements regarding targets, estimates and assumptions in respect of production and prices, operating costs and results, capital expenditures, reserves and resources and anticipated flow rates, and are or may be based on assumptions and estimates related to future technical, economic, market, political, social and other conditions and affected by the risk of further changes in government regulations, policies or legislation and that further funding may be required, but unavailable, for the ongoing development of Lake's projects. Lake Resources N.L. disclaims any intent or obligation to update any forward-looking statements, whether as a result of new information, future events or results or otherwise. The words "believe", "expect", "anticipate", "indicate", "contemplate", "target", "plan", "intends", "continue", "budget", "estimate", "may", "will", "schedule" and similar expressions identify forward-looking statements. All forward-looking statements made in this presentation are qualified by the foregoing cautionary statements. Investors are cautioned that forward-looking statements are not guarantees of future performance and accordingly investors are cautioned not to put undue reliance on forward-looking statements due to the inherent uncertainty therein. Lake does not undertake to update any forward-looking information, except in accordance with applicable securities laws.

Scale, Location – Jujuy



Scale - Large Lease Area

~45,000Ha – one of the largest holdings in Jujuy Province – owned 100%

Large battery makers want large scale lithium plays to secure future supply



Prime Location - Jujuy

Adjoining lithium brine production and development in world's prime lithium location

Same basin as Orocobre, SQM/ Lithium Americas, Advantage Lithium



Landmark Agreement

Signed with Jujuy Province
Confirms tenure & process after being stalled for 2 years



Targeting Basin Margins

Lithium Salt Lake Basins are fault bounded – good targets for lithium brines & high flow rates – often under alluvial cover – most advanced brine projects expanding on margins



Applied pre-boom

Areas applied for 2 years ago prior to recent boom in lithium brines; Targeted basin margins when not popular



Prime Location



Heartland of Lithium brines

3 Brine Projects

~45,000 Ha

**Adjoining world class lithium
brine production**

Target extensions under cover

Olaroz Project

Brine Project

Extends 30km North-South

**Next to Orocobre,
SQM/Lithium Americas**

Paso Project

Brine Project

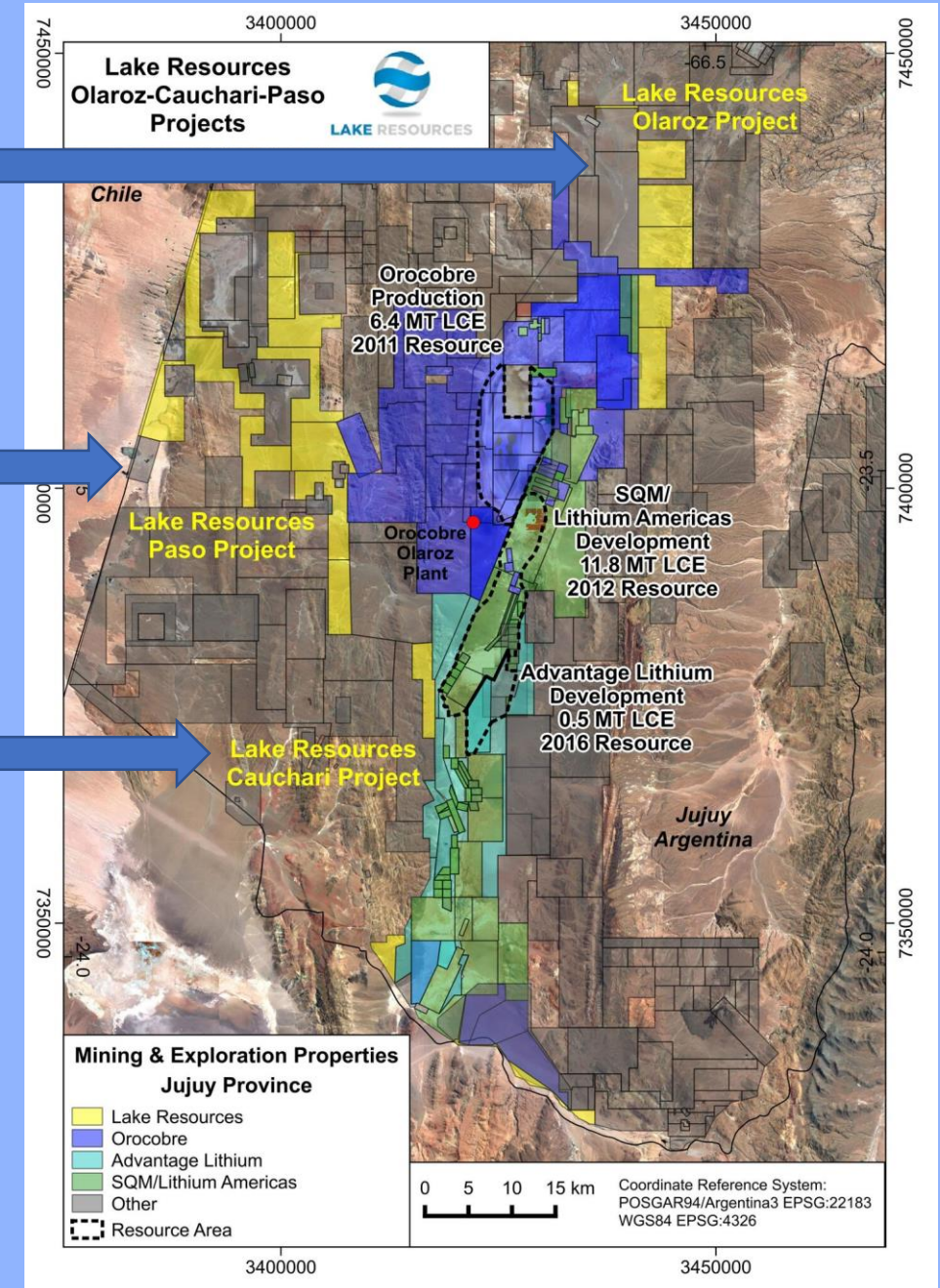
Next to LSC Lithium

Cauchari Project

Brine Project

Extends 11km North-South

**Next to Orocobre/Advantage
SQM/Lithium Americas**

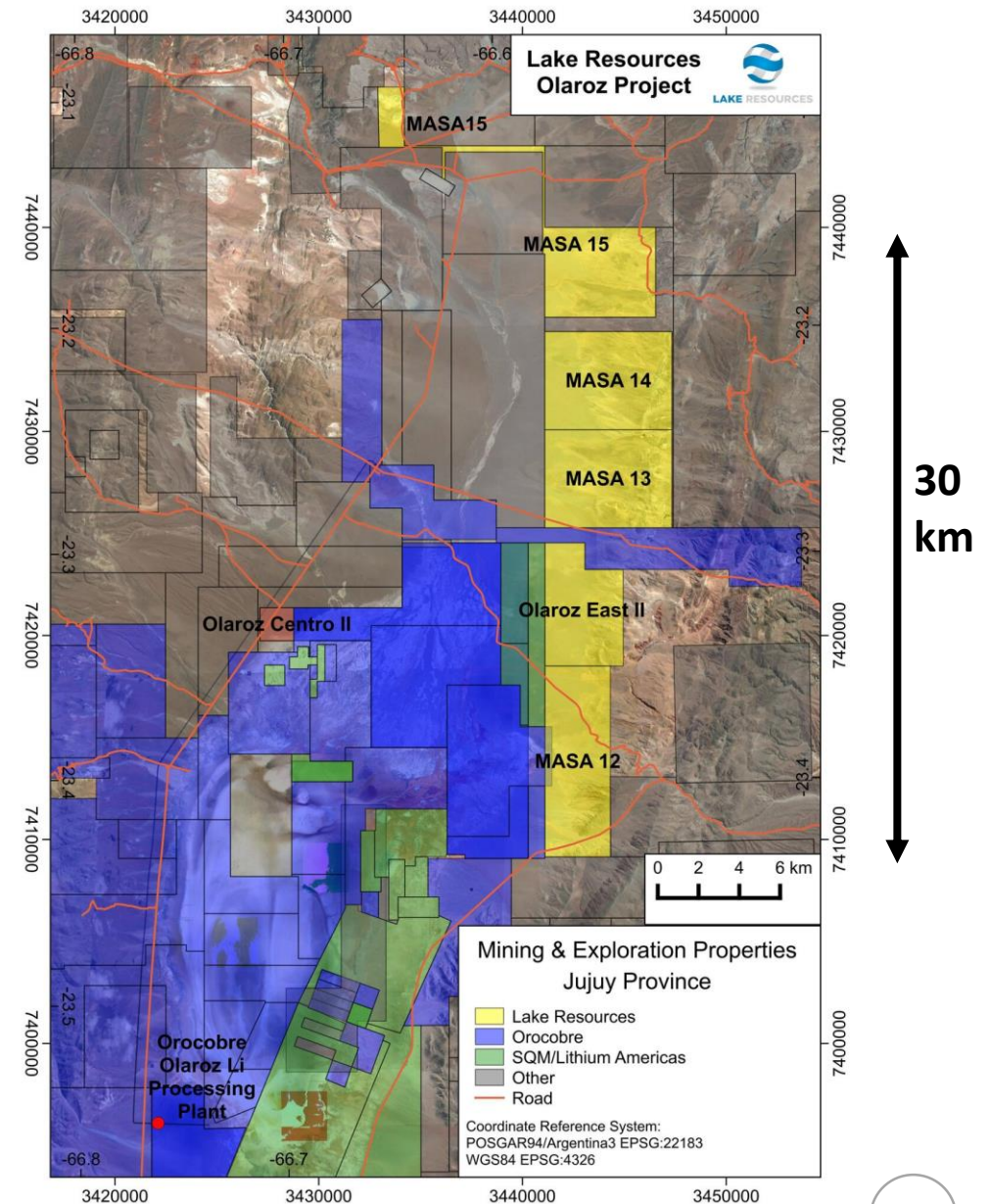
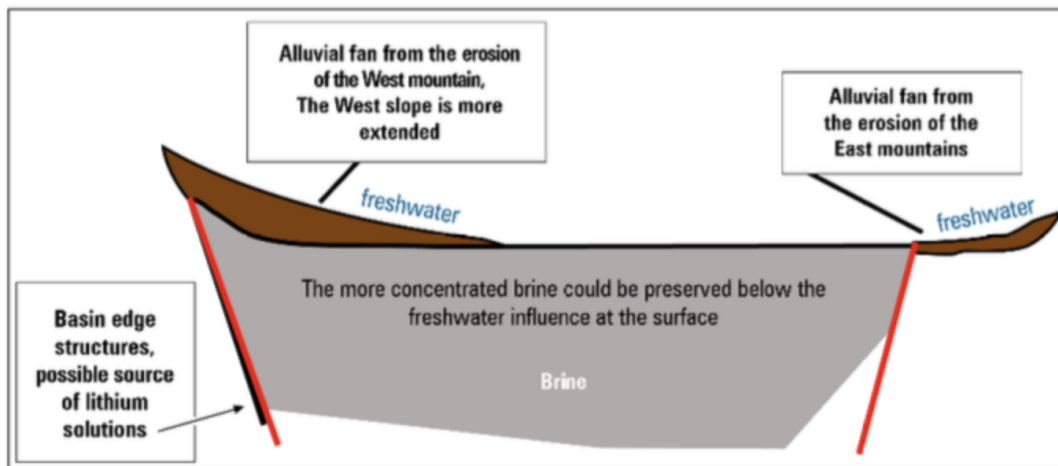


Olaroz Brine Project

Adjoins Production Area

Lithium Brine Project adjoins Orocobre Production & SQM/Lithium Americas Development Project

Targeting same aquifers; Most advanced lithium brine projects in Argentina are extending the resource out under the alluvial fans/alluvial cover on the basin margins



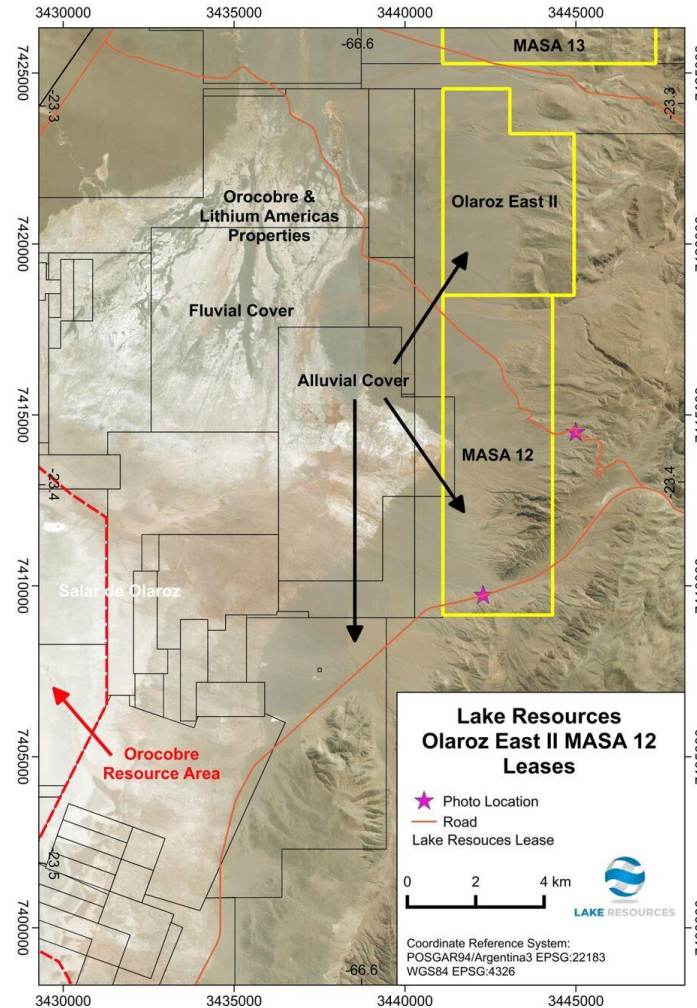
Olaroz Brine Project

Leases 30km Nth-Sth Covered Target

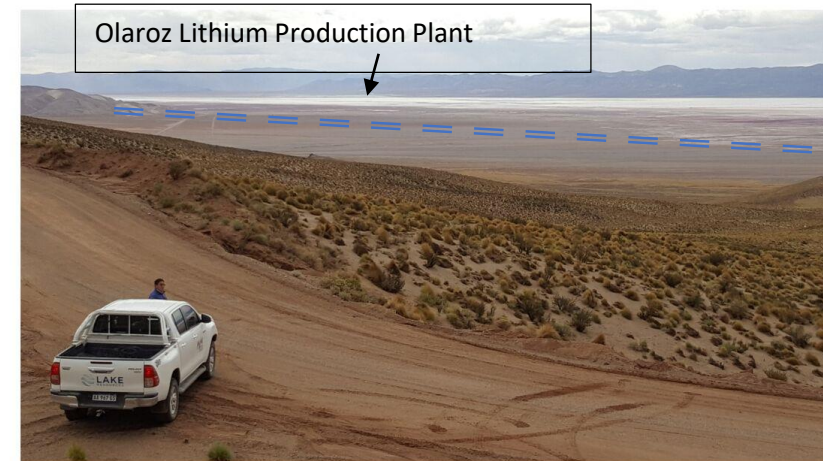
Targeting same aquifers as
Orocobre Production along
30km long margin

Covered targets / faults
under alluvial cover
Deeper aquifers

Photos indicate
approximate boundary



MASA12 looking N



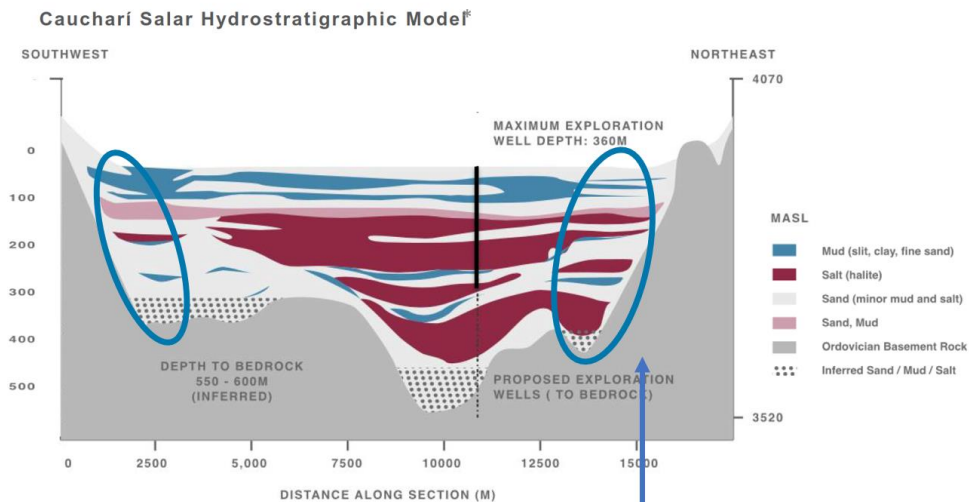
MASA 12 looking SW

Cauchari Brine Project

Adjoins Major Development

Lithium Brine Project adjoins SQM/Lithium Americas and Orocobre/Advantage Lithium Development Projects

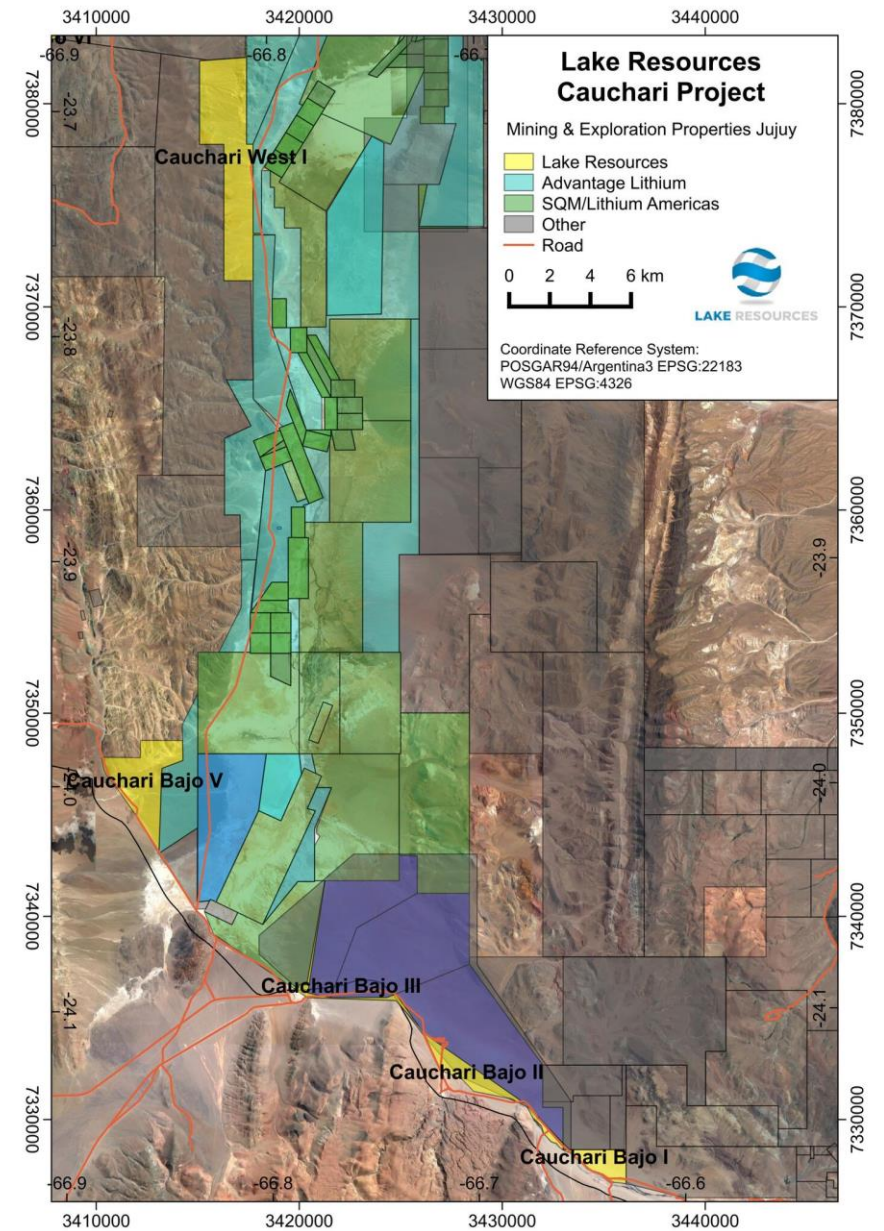
Targeting same aquifers; covered targets on margins



Olaroz/Cauchari Section

Targets on basin boundaries with potential for same aquifer & high flows

11 km



Source: Jujuy Registro Grafico Feb 18, Orocobre, Lithium Americas

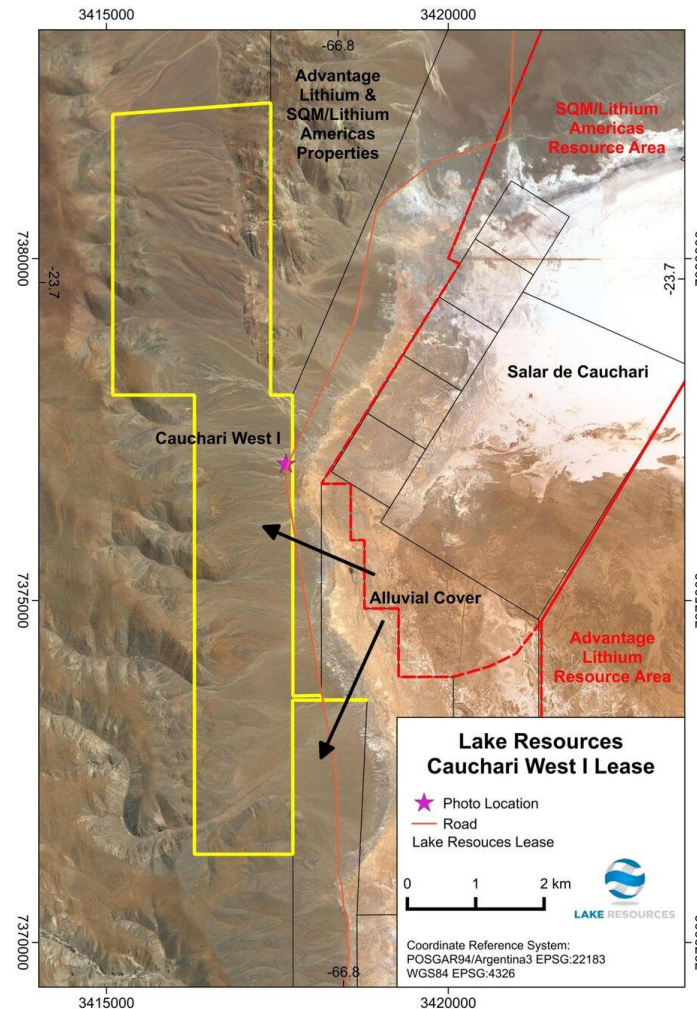
Cauchari Brine Project

Leases 11km Nth-Sth Covered Target

Targeting same aquifers as
SQM/Lithium Americas

Targets – Basin margins
under alluvial cover
Deeper aquifers

Photos indicate
approximate boundary



Cauchari West I nearby Advantage drill rig and Lithium America camp

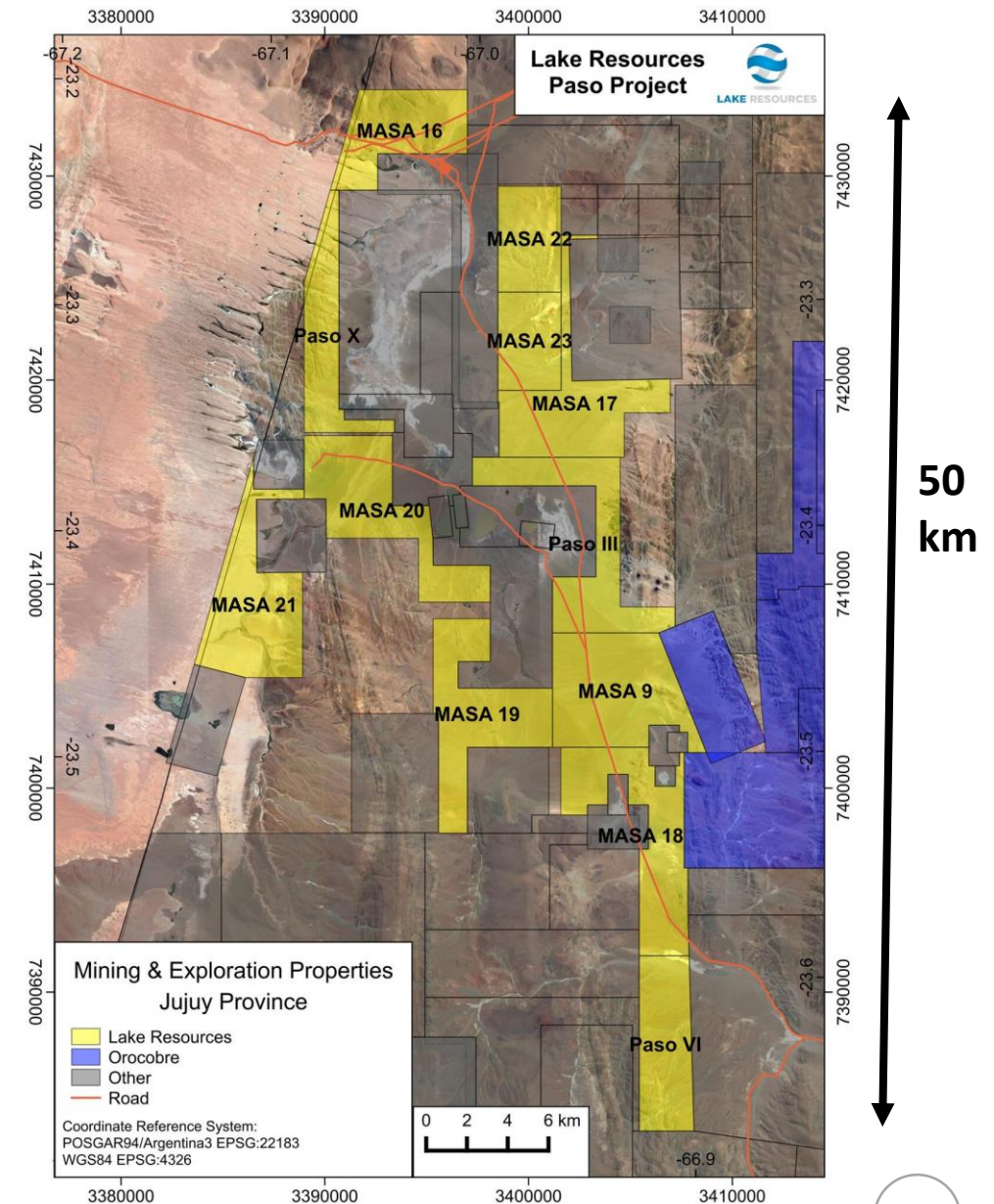


Cauchari West I looking NE

Paso Brine Project

New Development Potential

Lithium Brine Project adjoins LSC Lithium and extends over 50km with pre-boom leases



Corporate Snapshot



LAKE RESOURCES (ASX:LKE)

| | |
|-------------------------------|-------------|
| Total Current Shares on Issue | 233,643,026 |
|-------------------------------|-------------|

| | |
|--------------------------------------|------------|
| Listed Options (10c) Aug 2018 Expiry | 19,200,000 |
|--------------------------------------|------------|

| | |
|--|------------|
| Unlisted Options (5c) 4 Apr 2018 Expiry | 25,000,000 |
| Unlisted Options (5c) Nov 2018 Expiry | 6,250,000 |
| Unlisted Options (10c) May 2018 Expiry | 1,539,250 |
| Unlisted Options (28c) Dec 2020 Expiry | 9,500,000 |
| Unlisted options LithNRG yet to reach hurdle | 6,250,000 |

| | |
|--|-----------|
| Unlisted Notes \$1.6m issued Jan2018 (5% coupon) | 1,665,000 |
|--|-----------|

| | |
|--|------------|
| Option over Catamarca Pegmatite project if exercised | 19,000,000 |
| Performance shares LithNRG yet to reach hurdle | 12,500,000 |

Market Data

| | | |
|------------------|-----------------------------|--------------|
| Market Cap (\$A) | @ 18c/sh (5day VWAP 1Mar18) | \$42 million |
|------------------|-----------------------------|--------------|

| | | |
|------------|-------------|---------------|
| Cash (\$A) | 31 Dec 2018 | \$1.5 million |
|------------|-------------|---------------|

| | | |
|-------------|---------------|------------------|
| Share Price | 52 week range | \$0.03 – 0.31/sh |
|-------------|---------------|------------------|

| | |
|----------------|-------------------------------------|
| Share Register | 60% Top30, High Net Worth Investors |
|----------------|-------------------------------------|

Scale & Location Deep Value Being Unlocked

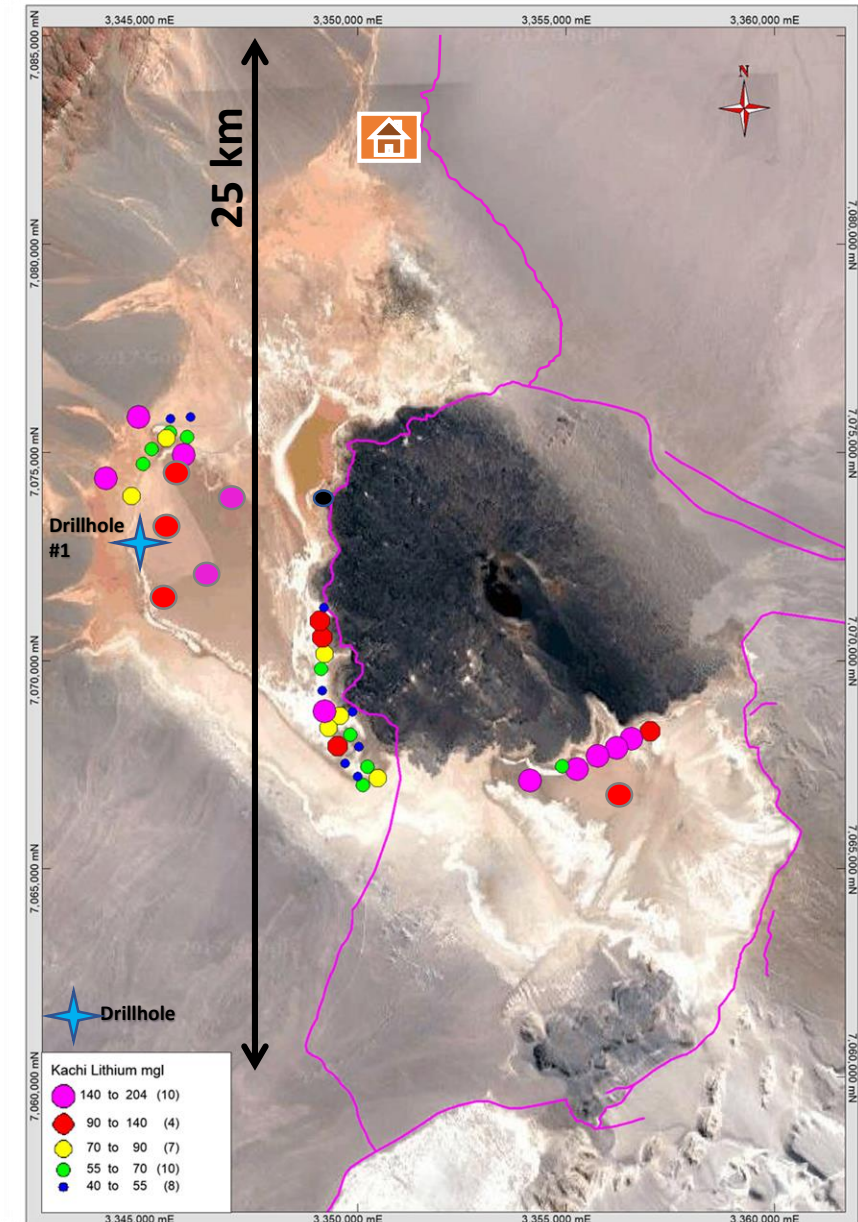


Kachi Drilling

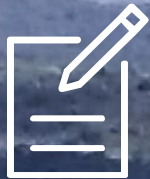
New Discovery Potential

Maiden drill program underway in large untested basin
(within ~50,000Ha of consolidated mining leases)
Positive surface results indicate new discovery

Rotary programme with two rigs started after
intersecting conductive brines in sandy horizons with
the diamond programme



Large Pegmatite Belt



New 150km Long Belt Pegmatites + Lithium

Newly recognised long belt
Only one other company in area
Adjacent drill results $>2\%$ Li_2O
Outcropping spodumene



Large area 70,000Ha

Option over area for 19M LKE
shares to be decided soon
Mining leases & exploration
leases
Easy access year round; low
altitude



Target- Thick Swarms

Initial exploration targeting
where pegmatites merge to
provide thick dyke swarms



Experienced Board



STEVE PROMNITZ
Managing Director

Extensive Project Management
experience in South America –
Geologist and Finance
experience



STU CROW
Chairman Non-Exec

More than 25 years of
experience (numerous public
companies) and in financial
services



NICK LINDSAY
Non-Exec Director

25+ years of experience in
Argentina/Chile/Peru (PhD in
Metallurgy & Materials Engineering);
Taken companies from inception to
development to acquisition on
projects in South America



ANDREW BURSILL
CFO/Company Secretary

Accounting/ governance
experience. Director, CFO and
Coy-Sec of a number of ASX
companies

Experienced Local Team

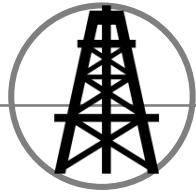
Geologists; Hydrogeologists; Assistants Legal & Accounting

Head Hydrogeologist ex-Orocobre; ex-NeoLithium
Extensive exploration experience in Argentina
Existing long term relationships with team members



Unlocking Deep Value

Catalyst rich 2018



Drilling

With Drilling Results

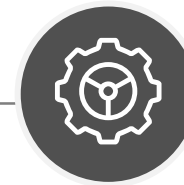
Drilling on Kachi underway
Results to display upside in
potential new discovery
LOI with State to accelerate project



Access

Landmark Agreement to Access Olaroz-Cauchari

Recent agreement to lead to
approvals for drilling



Offtake

Offtake Partner Potential & Resource/Scoping Study

Discussions can advance with
potential Offtake Partners once
drill results available – leading to
resource & scoping study

LAKE RESOURCES

Scale, Location, Unlocked Value
- Lithium at a Higher Level -



LAKE RESOURCES

ASX: LKE



steve@lakeresources.com.au



www.lakeresources.com.au



+61 2 9188 7864
IR (Henry) +61 431 271 538



twitter.com/Lake_Resources