



LAKE RESOURCES N.L. (ASX:LKE)

ASX Market Announcements Office

5 December 2017

LAKE DRILLING PROGRESSING IN BRINES AT THE KACHI LITHIUM BRINE PROJECT

- **Drilling is progressing within brines below the lithium bearing salt lake of the Kachi Lithium Brine Project in Catamarca Province, Argentina.**
- **The diamond drill rig has advanced to below 70m depth in the first hole, encountering two brine horizons with conductivities similar to surface.**
- **Initial results from the brines are anticipated in 3-4 weeks' time**

Lithium exploration company Lake Resources N.L. (ASX:LKE, "Lake" or "LKE") is pleased to announce that drilling is progressing (below 70m depth) and has successfully encountered concentrated brine horizons in the first drill hole under its 100%-owned Kachi Lithium Brine Project in Catamarca.

These brines display conductivities similar to the lithium bearing brines sampled at surface and is a positive indicator for future results. Initial results are anticipated in 3-4 weeks' time. The first drill hole is planned to terminate at approximately 100-110m with the rig then commencing on the deeper second hole nearby as part of a maiden 1,000m diamond drilling programme. The programme can be extended pending the outcome of assay results.

Lake Resources' Managing Director Steve Promnitz said: "Drilling has intersected near-surface brines which confirms the basis of the project and a second hole will target deeper aquifers. Conductivity and density are positive and have proven good indicators of lithium at surface. We eagerly anticipate the first set of assay results which we will report as soon as possible. "

Project Background

The Kachi Lithium Brine Project covers over 50,000 ha of mining leases owned 100% by Lake's Argentine subsidiary, Morena del Valle Minerals SA, over the centre of the known salt lakes in the deepest part of a large basin. Surface sampling has revealed positive lithium results in conductive brines which will be expanded through the drilling program and geophysics.

The company has a focus on an inclusive approach with local communities together with appropriate environmental management. The Kachi Project was selected by the State of Catamarca to be accelerated, together with a small group of energy and mining projects in the province, to ensure appropriate development. A Letter of Intent was signed with Catamarca facilitate the project through various permitting stages in exploration and development to production which bodes well for the future.

For further information please contact:

Steve Promnitz
Managing Director

+61 2 9188 7864

steve@lakeresources.com.au

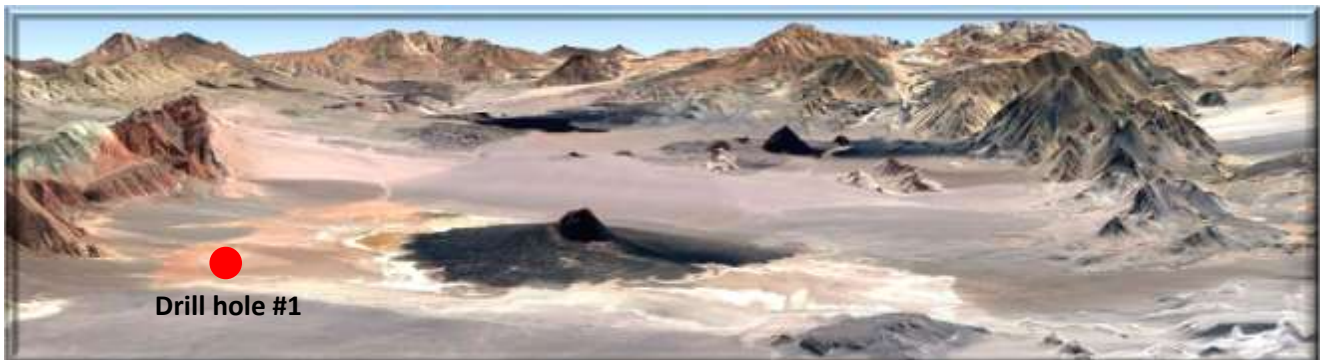
<http://www.lakeresources.com.au>

Released through: Henry Jordan, Six Degrees Investor Relations: +61 (0) 431 271 538

Follow Lake Resources on Twitter:



https://twitter.com/Lake_Resources

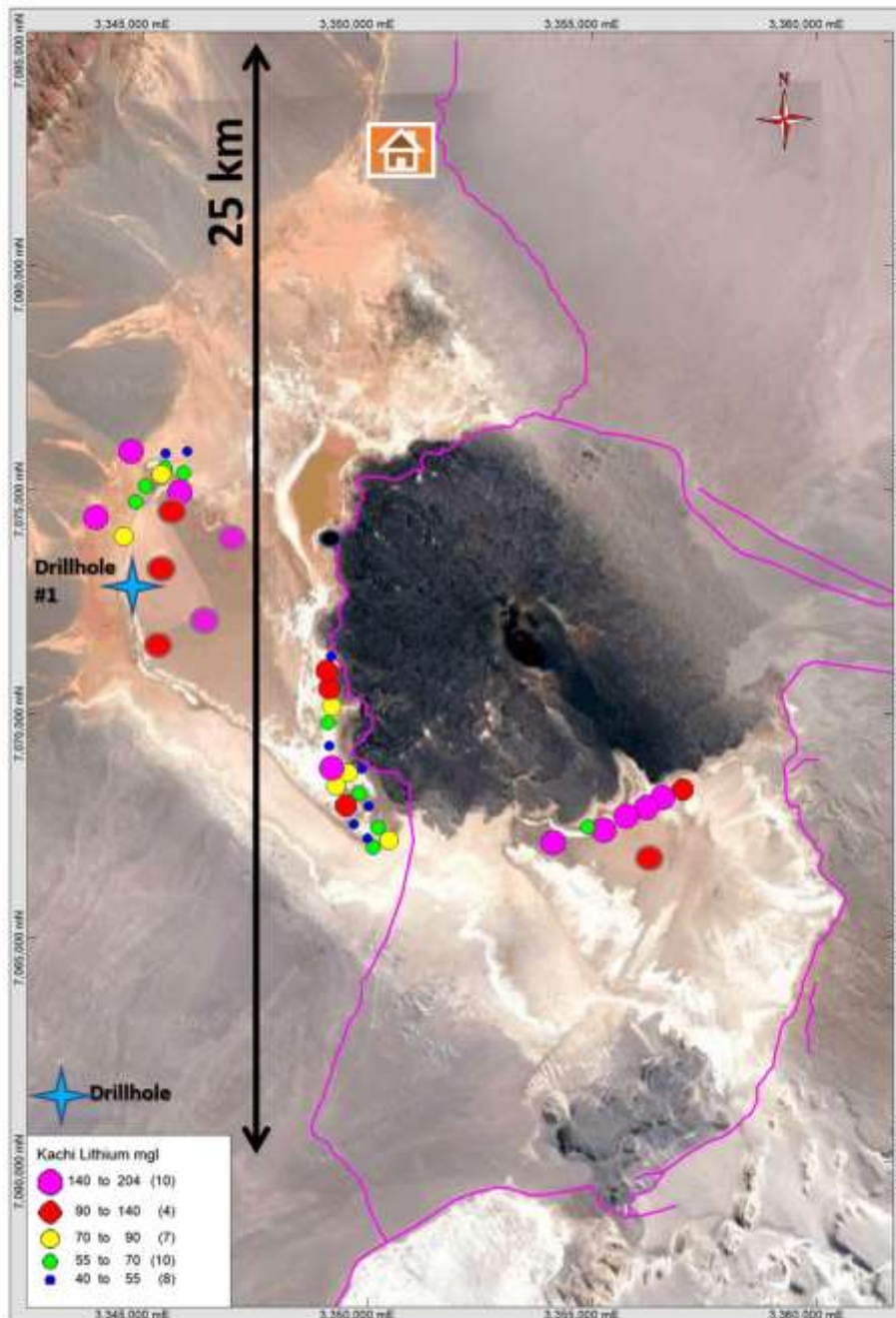


Images of the diamond drill rig at the first drill hole of the Kachi project

Competent Person's Statement – Kachi Lithium Brine Project

The information contained in this ASX release relating to Exploration Results has been compiled by Mr Andrew Fulton. Mr Fulton is a Hydrogeologist and a Member of the Australian Institute of Geoscientists and the Association of Hydrogeologists. Mr Fulton has sufficient experience that is relevant to the style of mineralisation and type of deposit under consideration and to the activity being undertaken to qualify as a competent person as defined in the 2012 edition of the Australasian Code for Reporting of Exploration Results, Mineral Resources and Ore Reserves.

Andrew Fulton is an employee of Groundwater Exploration Services Pty Ltd and an independent consultant to Lake Resources NL. Mr Fulton consents to the inclusion in this announcement of this information in the form and context in which it appears. The information in this announcement is an accurate representation of the available data from initial exploration at the Kachi project.



Location of near surface auger samples and the first drill hole at the Kachi project

Background on Lake Resources NL (ASX:LKE)

Lake Resources NL (ASX:LKE, Lake) is undertaking an aggressive exploration programme to explore and develop prime lithium projects in Argentina, owned 100%, among some of the largest players in the lithium sector. Lake holds one of the largest lithium tenement packages in Argentina (~170,000Ha) secured prior to a significant 'rush' by major companies with three key lithium brine projects located in the Lithium Triangle which produces half of the world's lithium. Lake also holds one large package of lithium pegmatite properties which were an unappreciated source of lithium in Argentina until recently.

The three key brine projects, Olaroz/Cauchari, Paso and Kachi, have similar settings to major world class brine projects being developed in the highly prospective Jujuy and Catamarca Provinces. One project is located next to Orocobre's Olaroz lithium production and SQM/Lithium Americas Cauchari project. The Kachi project covers 50,000 Ha over a salt lake south of FMC's lithium operation and near Albemarle's Antofalla project.

Drilling has started at Kachi and results are anticipated over the coming months. Surface sampling has revealed positive lithium results which will be expanded through the drilling program and geophysics. Exploration and permitting over Kachi and the other projects will provide several catalysts for the company's growth as these areas are assessed for major discoveries

Significant corporate transactions continue in adjacent leases with development of SQM/Lithium Americas Olaroz/Cauchari project with an equity/debt investment over \$300 million and Advantage Lithium's equity transaction in some of Orocobre's leases. LSC Lithium has also raised over \$60 million on a large lease package in similar areas as Lake's properties.

Table 1 Report: Kachi Lithium Brine Project

Criteria	Section 1 - Sampling Techniques and Data
<i>Sampling techniques</i>	<ul style="list-style-type: none"> • Brine samples were taken from the diamond drill hole with a straddle packer device to obtain representative samples of the formation fluid by purging a volume of fluid from the isolated interval, to minimize the possibility of contamination by drilling fluid then taking the sample. from The fluid used for drilling is brine sourced from the drill hole and the return from drillhole passes back into the excavator dug pit lined to avoid leakage. • The brine sample was collected in a clean plastic bottle (1 litre) and filled to the top to minimize air space within the bottle. A duplicate was collected at the same time for storage and submission of duplicates to the laboratory. Each bottle was taped and marked with the sample number. • Drill core in the hole was recovered in 1.5 m length core runs in core split tubes to minimize sample disturbance. • Drill core was undertaken to obtain representative samples of the sediments that host brine.
<i>Drilling techniques</i>	<ul style="list-style-type: none"> • Diamond drilling with an internal (triple) tube was used for drilling. The drilling produced cores with variable core recovery, associated with unconsolidated material, in particularly sandy intervals. Recovery of these more friable sediments is more difficult with diamond drilling, as this material can be washed from the core barrel during drilling. • Brine has been used as drilling fluid for lubrication during drilling.
<i>Drill sample recovery</i>	<ul style="list-style-type: none"> • Diamond drill core was recovered in 1.5m length intervals in the drilling triple (split) tubes. Appropriate additives were used for hole stability to maximize core recovery. The core recoveries were measured from the cores and compared to the length of each run to calculate the recovery. • Brine samples were collected at discrete depths during the drilling using a double packer over a 1 m interval (to isolate intervals of the sediments and obtain samples from airlifting brine from the sediments within the packer) over an ~1 m interval. • As the brine (mineralisation) samples are taken from inflows of the brine into the hole (and not from the drill core – which has variable recovery) they are largely independent of the quality (recovery) of the core samples. However, the permeability of the lithologies where samples are taken is related to the rate and potentially lithium grade of brine inflows.
<i>Logging</i>	<ul style="list-style-type: none"> • Sand, clay silt and salt was recovered in a triple tube diamond core drill tube, was examined for geologic logging by a geologist and a photo taken for reference. • Diamond holes are logged by a senior geologist who also supervised taking of samples for laboratory porosity analysis. • Logging is both qualitative and quantitative in nature. The relative proportions of different lithologies which have a direct bearing on the overall porosity, contained and potentially extractable brine are noted, as are more qualitative characteristics such as the sedimentary facies and their relationships. When cores are split for sampling they are photographed.
<i>Sub-sampling techniques and sample preparation</i>	<ul style="list-style-type: none"> • Brine samples were collected by packer sampling of brine, on a metre basis from the fluid extracted from within the packer device as a representative sample following purging of brine from the packer equipment and surrounding sediments.. • The brine sample was collected in one-litre sample bottles, rinsed and filled with brine. Each bottle was taped and marked with the sample number.
<i>Quality of assay data and laboratory tests</i>	<ul style="list-style-type: none"> • The Alex Stewart Argentina/Norlab SA in Palpala, Jujuy, Argentina, is used as the primary laboratory to conduct the assaying of the brine samples collected as part of the sampling program. They also analyzed blind control samples and duplicates in the analysis chain. The Alex Stewart/Norlab SA laboratory is ISO 9001 and ISO 14001 certified, and it is specialized in the chemical analysis of brines and inorganic salts, with experience in this field and with the oversight of the experienced Alex Stewart Argentina S.A. laboratory in Mendoza, Argentina, which has been operating for a considerable period.. • The quality control and analytical procedures used at the Alex Stewart/Norlab SA laboratory are considered to be of high quality and comparable to those employed by ISO certified laboratories specializing in analysis of brines and inorganic salts.
<i>Verification of sampling and assaying</i>	<ul style="list-style-type: none"> • Field duplicates, standards and blanks will be used to monitor potential contamination of samples and the repeatability of analyses. Accuracy, the closeness of measurements to the “true” or accepted value, will be monitored by the insertion of standards, or reference samples, and by check analysis at an independent (or umpire) laboratory. • Duplicate samples in the analysis chain were submitted to Alex Stewart/Norlab SA as unique samples (blind duplicates) during the process • Stable blank samples (distilled water) were used to evaluate potential sample contamination and will be inserted in future to measure any potential cross contamination • Samples were analysed for conductivity using a hand held Hanna pH/EC multiprobe. .

<i>Location of data points</i>	<ul style="list-style-type: none"> The diamond drill hole sample sites were located with a hand held GPS. The properties are located at the junction of the Argentine POSGAR grid system Zone 2 and Zone 3 (UTM 19) and in WGS84 Zone 19 south.
<i>Data spacing and distribution</i>	<ul style="list-style-type: none"> Brine samples were collected over 1m intervals every 6 m intervals within brine producing aquifers.
<i>Orientation of data in relation to geological structure</i>	<ul style="list-style-type: none"> The salt lake (<i>salar</i>) deposits that contain lithium-bearing brines generally have sub-horizontal beds and lenses that may contain sand, gravel, salt, silt and clay. The vertical diamond drill holes will provide a better understanding of the stratigraphy and the nature of the sub-surface brine bearing aquifers
<i>Sample security</i>	<ul style="list-style-type: none"> Samples were transported to the Alex Stewart/Norlab SA laboratory for chemical analysis in sealed 1-litre rigid plastic bottles with sample numbers clearly identified. Samples were transported by a trusted member of the team. The samples were moved from the drillhole sample site to secure storage at the camp on a daily basis. All brine sample bottles are marked with a unique label not related to the location.
<i>Review (and Audit)</i>	<ul style="list-style-type: none"> No audit of data has been conducted to date.
Criteria	Section 2 - Mineral Tenement and Land Tenure Status
<i>Mineral tenement and land tenure status</i>	<ul style="list-style-type: none"> The Kachi Lithium Brine project is located approximately 100km south-southwest of FMC's Hombre Muerto lithium operation and 45km south of Antofagasta de la Sierra in Catamarca province of north western Argentina at an elevation of approximately 3,000m asl. The project comprises approximately 51,770 Ha in twenty seven mineral leases (minas) of which five leases (9,445 Ha) are granted for drilling, twenty leases are granted for initial exploration (39,575 Ha) and two leases (2750 Ha) are applications pending granting. The tenements are believed to be in good standing, with payments made to relevant government departments.
<i>Exploration by other parties</i>	<ul style="list-style-type: none"> Marifil Mines Ltd conducted sparse near-surface pit sampling of groundwater at depths less than 1m during 2009. Samples were taken from each hole and analysed at Alex Stewart laboratories in Mendoza Argentina. Results were reported in an NI 43-101 report by J. Ebisch in December 2009 for Marifil Mines Ltd. NRG Metals Inc recently commenced exploration in adjacent leases under option. An initial diamond drillhole is underway after completion of a VES ground geophysical survey. A NI 43-101 report was released in February 2017. No other exploration results were able to be located
<i>Geology</i>	<ul style="list-style-type: none"> The known sediments within the <i>salar</i> consist of salt/halite, clay, sand and silt horizons, accumulated in the <i>salar</i> from terrestrial sedimentation and evaporation of brines . Brines within the salt lake are formed by solar concentration, with brines hosted within sedimentary units . Geology was recorded during the diamond drilling
<i>Drill hole Information</i>	<ul style="list-style-type: none"> Lithological data was collected from the hole as it was drilled and cores were retrieved. Detailed geological logging of cores has not been completed to date. All drill holes are vertical, (dip -90, azimuth 0 degrees).
<i>Data aggregation methods</i>	<ul style="list-style-type: none"> N/A
<i>Relationship between mineralisation widths and intercept lengths</i>	<ul style="list-style-type: none"> N/A pending results
<i>Diagrams</i>	<ul style="list-style-type: none"> A drill hole location plan will be provided in the following release with results
<i>Balanced reporting</i>	<ul style="list-style-type: none"> No results are available from the drilling to date, other than observations of the sediment types. Information will be provided as it becomes available.
<i>Other substantive exploration data</i>	<ul style="list-style-type: none"> There is no other substantive exploration data available regarding the project.
<i>Further work</i>	<ul style="list-style-type: none"> The company is undertaking a 1000m maiden diamond drilling programme in 4 holes and will expand the programme based on results to rotary water well drilling and further diamond drilling. Ground geophysics will also be undertaken.